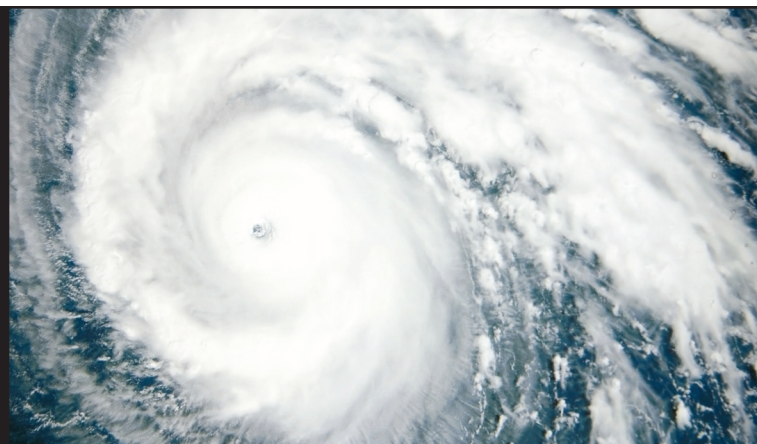


HURRICANE & SEVERE WEATHER SURVIVAL GUIDE



FAMILY PREPAREDNESS CHECKLIST

1. Call your local emergency management planning and zoning office to find out if you live in an area that could flood during harsh weather.
2. Prepare an evacuation plan. Share your plan with family members and friends you plan to stay with. Otherwise, locate and plan to go to a Red Cross shelter.
3. Have a plan for your pet. Contact your veterinarian or local Humane Society for information on “pet-friendly” emergency shelters in your area.
4. Write instructions on turning off your home’s utilities if advised to do so by authorities. Include location of valves, switches, and tools. Place the instructions in your Disaster Supplies Kit.
5. List all items to bring inside. Keep list inside your Disaster Supplies Kit.
6. Purchase items now to board up windows and protect your home. Precut plywood so that you can quickly cover windows if necessary.
7. Alert a family member or friend living outside the hurricane path of your plans in case of emergency. Post that name and phone number in a visible place in your home.

IMPORTANT PHONE NUMBERS:

Local Chapters	King & Queen, West Point, King William
American Red Cross	(757) 253-0228
Lancaster, Middlesex, and Richmond Counties	
(804) 435-7669	
Northumberland County	Other Important Numbers
(804) 580-4933	National Weather Service
Gloucester County	(757) 899-4200
(804) 642-9478	Federal Emergency Management Agency
Mathews, York, Poquoson	(800) 621-FEMA (3362)
(757) 898-3090	TTY (800) 462-7585

Disaster Supply Kit

- First Aid Kit
- Extra supply of Rx and non-Rx drugs
- Three day supply of non-perishable food
- At least 3 gallons of water per person
- Rainwear, bedding or sleeping bags
- Portable radio, flashlight and extra batteries
- Special items for infants, elderly, or disabled family members
- Written instructions on how to turn off your gas, water, and electric service if authorities advise you to do so
- Waterproof containers for important documents

Warning or Watch? Know the difference!

HURRICANE WATCH: Hurricane conditions (heavy rain, tidal flooding, and winds above 75 mph/120 kph) are possible within 36 hours. Prepare to take immediate action in case a warning is issued.

WHEN A HURRICANE WATCH IS ISSUED:

- Tune to 101-7 BAY FM or 104.9 WIGO for the latest information from local officials, storm status, closings and cancellations.
- Prepare to bring inside lawn furniture, outdoor decorations, trash cans, hanging plants, and objects vulnerable to high winds.
- Prepare to cover all windows of your home with 1/2” plywood. (tape does not prevent window breakage)
- Fill your car’s gas tank.

HURRICANE WARNING: Hurricane conditions are expected within 24 hours. Complete all storm preparations and evacuate if directed by local officials.

WHEN A HURRICANE WARNING IS ISSUED:

- Tune to 101-7 BAY FM or 104.9 WIGO at :05 and :35 each hour for updated emergency information from local officials.
- Stay indoors, away from windows.
- Listen to the advice of local officials. LEAVE if they tell you to do so.
- Be alert for tornadoes.